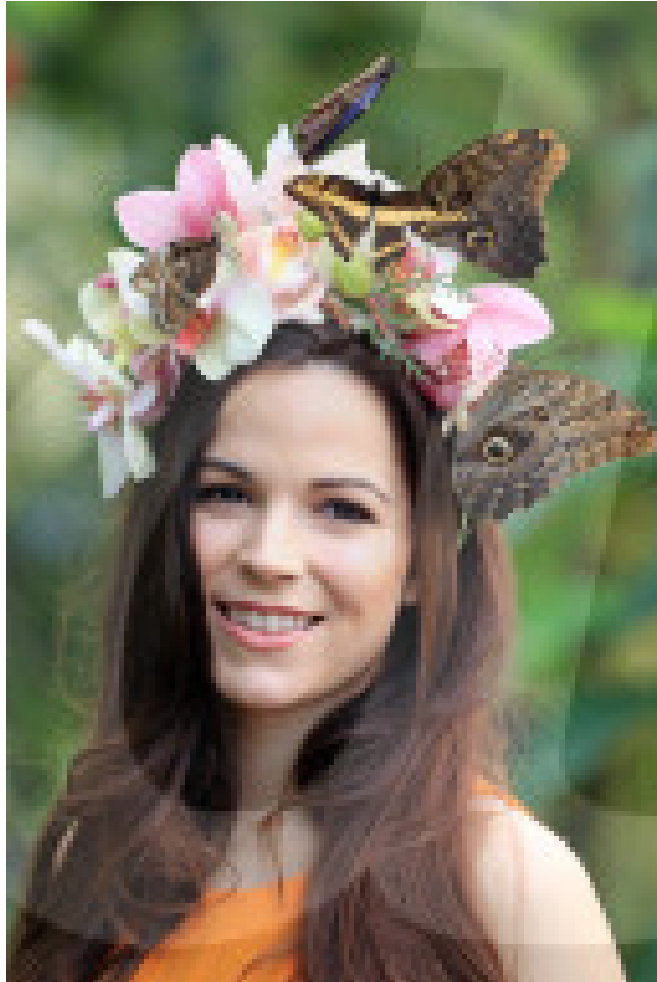


FEATURE - Schmetterlinge: Ein lebendiger Kopfschmuck



Reference

DUK10049808_016

Title

FEATURE - Schmetterlinge: Ein lebendiger Kopfschmuck

Creation date

20170113

Caption

Mandatory Credit: Photo by Oliver Dixon/REX/Shutterstock (7825885a)

Model Jessie May Smart pictured wearing a floral headpiece of tropical flowers designed by young florist Emma Reynolds to mark the opening of Butterflies in the Glasshouse at RHS Garden Wisley today.

About the event:

Butterflies in the Glasshouse will run from 14 January to 5 March 2017.

Butterflies in the Glasshouse is an annual event at RHS Garden Wisley in which hundreds of butterflies emerge from their pupae and are released into the warm surroundings of the Glasshouse. Fifty different species of butterfly, including the striking blue morpho, giant owl, king swallowtail and Malay lacewing will flit and feed among tree ferns, tall palms, lush-leaved creepers and vibrant flowers in the tropical zone. The plant life in the glasshouse includes shimmering bromeliads, dangling Heliconias, flamboyant red Anthuriums and cascading orchids. The array of food plants for the butterflies includes Calliandra, Lantana with their dainty clustered flowers, Justicia, Pavonia and Pachystachys.

Butterflies in the Glasshouse, Wisley Gardens, UK - 13 Jan 2017

(FOTO:DUKAS/REX)

Special instructions

(c) Dukas

City

Credit

DUKAS

Source

REX

Author

/ 7825885a
Original references
7825885a