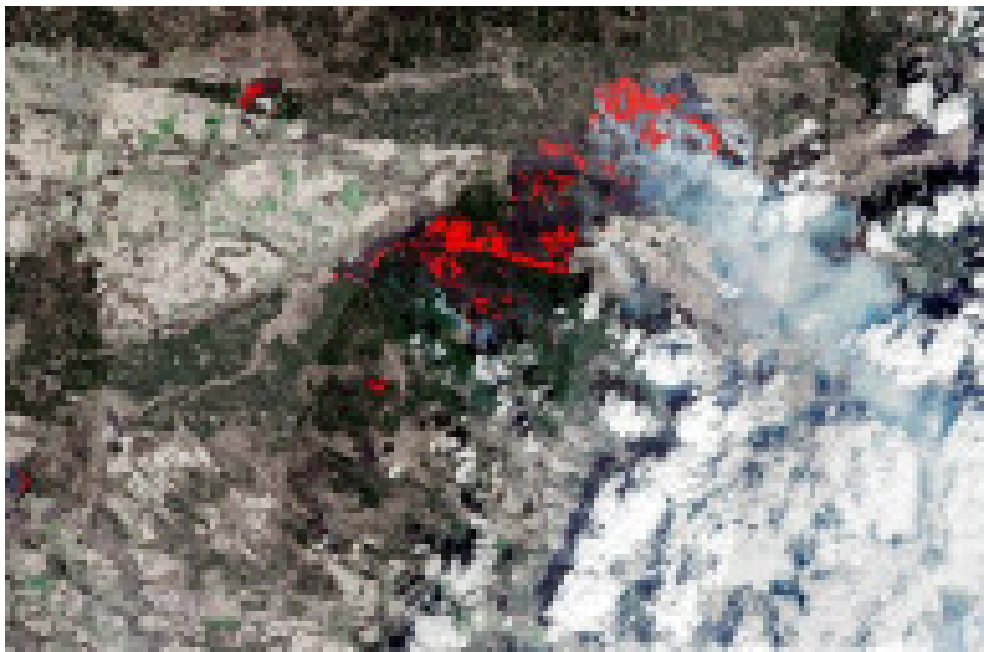


Mapping fire near Chernobyl



Reference

DUKAS_115067150_EYE

Title

Mapping fire near Chernobyl

Creation date

20200416

Caption

Mapping fire near Chernobyl. This extract of a burned area mapping product was generated by CIMA Foundation and Fadeout using the WASDI processing environment. It is based on images acquired by Copernicus Sentinel-2 on 26 March and 10 April 2020. It shows the burned area around Chernobyl in the Ukraine on 10 April following an outbreak of wildfires. CIMA Foundation is leading an ESA project called eDRIFT that is looking at Disaster Risk Financing using Cloud processing of Copernicus Sentinel imagery.

Credit: ESA / eyevine

Contact eyevine for more information about using this image:

T: +44 (0) 20 8709 8709

E: info@eyevine.com

<http://www.eyevine.com>

(FOTO: DUKAS/EYEVINE)

Special instructions

WORLDWIDE RIGHTS AVAILABLE. End users shall not licence, sell, transmit, or otherwise distribute any photographs represented by eyevine, to any third party.

City

Credit

DUKAS

Source

EYEVINE

Author

ESA / eyevine

Original references

eyevine